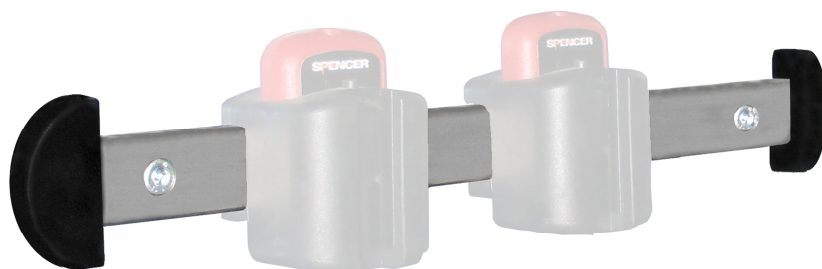


G-RAIL

Rail bar



Bar to be installed on the vehicle's wall, designed to hold and secure devices such as sphygmomanometer, IV holders, flowmeter and many other devices used within the ambulance, by means of the dedicated brackets.

Specific features

- Compact and sturdy structure
- Easy to clean stainless steel structure
- No sharp edges thanks to the use of rounded end stops

Technical data

Dimensions	1030x58x32 ± 2 mm
Materials	Nylon, steel
Weight	1050 ± 20 g

Reference standard

- UNI EN 19054
- EN 1789

Class I Med.Device according to Dir. 93/42/CEE

BARRA RAIL G-RAIL 1 m
OX07811A



Accessories

- OX07102 – REK PRO THREADED CLAMP 10 G
- OX07104 – REK STANDARD CLAMP 10 G

CND Classification	V0899
Registration number	805660

Rev.0 (22/02/2017)

UNCHECKED COPY – further revisions will be available on <http://support.spencer.it>
Spencer Italia S.r.l. a socio unico Collecchio (PR) Italia Tel. +39.0521.541111 Fax +39.0521.541222

www.spencer.it