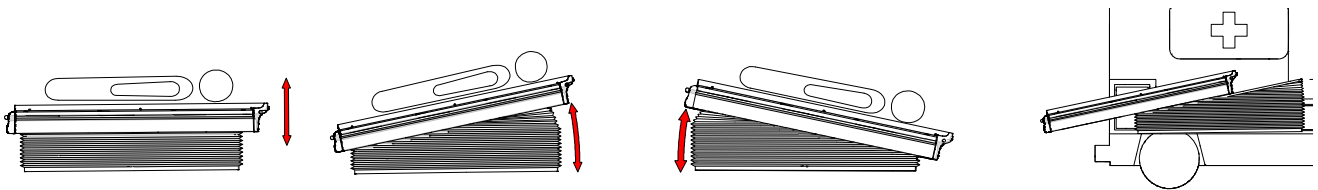
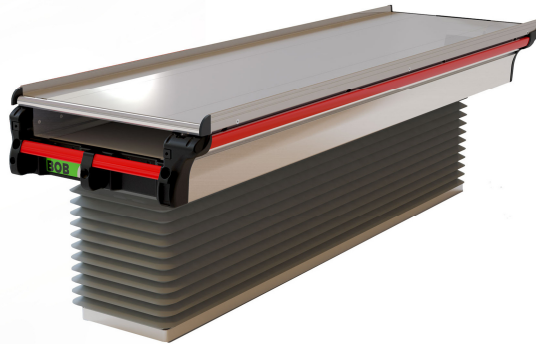


BOB GALAXY

Stretcher support



Stretcher support intended for installation on ambulances. The device is able to assume several positions that facilitate both loading and unloading of the stretcher, allowing at the same time easier access to the stretcher.

Specific features

- The patented design increases the available space for seat and walk of rescuers
- The structure of the support plane makes it non-deformable
- Loading system with roller (slide optional)
- Dedicated compartment to store immobilization systems like spinal boards or pick-up stretchers.
- Can assume the positions tilt front and tilt back
- Electronically controlled height adjustment system dedicated to make the stretcher loading easier
- Extruded aluminum board easy to clean
- The control panel can be integrated in the structure and its position can be customized
- Operating handles are easily accessible
- Suspension automatically regulated according to the patient weight
- Lockable allowing to perform CPR
- Extraction in tilted position to allow easy loading/unloading of the stretcher
- Can be moved sideways manually (both left and right)
- The device automatically returns in horizontal position once it is moved inside the vehicle

Reference standard

- 10g tested according to EN1789:2007+A2:2014
- EN 1865-5:2012
- ECE-R-10

Standard equipment

- BO10103 - Electric pack (Led light and 12V cigarette lighter socket)

Optional accessories

- BO10100 – Slide 120 mm
- BO10101 – Slide 180 mm
- BO10102 – Slide 350 mm
- BO10107 – Basin for spinal board housing
- Oxygen socket on the front side
- Side Oxygen module (up to 6 sockets)
- System for adaptive height adjustment

Technical data

Length <small>(control panel not considered)</small>	2010 mm
Width	600 mm
Minimum height	375 mm
Maximum height	580 mm
Sideways movement	230 ± 10 mm
Tilt front angle	Max 14°
Tilt back angle	Max 15°
Materials	Al, Steel, PE, Nylon
Loading capacity	300 kg
Weight	110 ± 10 kg

Device in compliance with dir. 2006/42/CE

- BO10000 – BOB GALAXY - ELECTRICAL SHOCK ABSORBING STRETCHER SUPPORT



Rev.3 (14/02/2018)

UNCHECKED COPY – further revisions will be available on <http://support.spencer.it>
 Spencer Italia S.r.l. Sala Baganza (PR) Italia Tel. +39.0521.541111 Fax +39.0521.541222
spencer.it